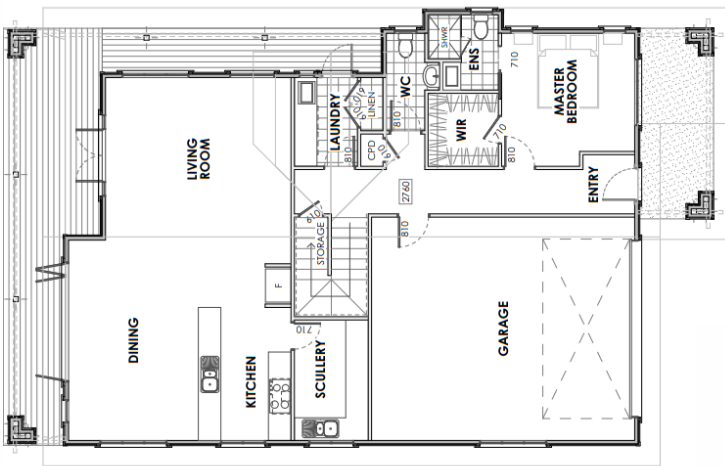
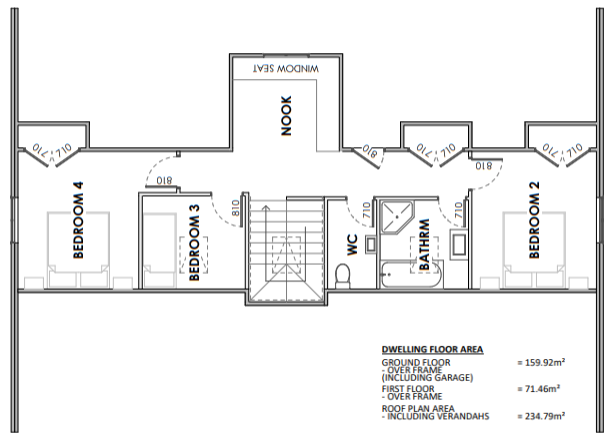


# The Fresno Design Plan



Ground Floor



First Floor

DWELLING FLOOR AREA	
GROUND FLOOR OVER FRAME (INCLUDING GARAGE)	= 159.92m <sup>2</sup>
FIRST FLOOR OVER FRAME	= 71.46m <sup>2</sup>
ROOF PLAN AREA INCLUDING VERANDAHS	= 234.79m <sup>2</sup>

**234m<sup>2</sup> double story bungalow style home, 4 Bedroom, 2 Bath, Separate WC, Open Dining, Kitchen and Lounge, Separate laundry, Large double garage**

Our Fresno design features all the benefits and comforts of a modern family home with a large kitchen and butlers pantry, internal access garage, and spacious bedrooms providing plenty of space for a growing family. The gorgeous wrap around deck provides added living space for easy entertaining.



# The Fresno Design Plan



All our designs are completely customisable so if you'd like to widen or lengthen this design, flip it sideways, or change the layout - anything is possible to suit the needs of your family or property.

We are always available to chat through the options with you.